

L'APPROCCIO DI RETE NEL CONTRASTO ALLA VIOLENZA CONTRO LE DONNE

DALLA FORMAZIONE REGIONALE AD UNO SGUARDO EUROPEO

Effective screening of violence against women in health settings. The Spanish experience

Vicenta Escribà-Agüir.

Health Promotion Service.
General Direction of Public Health



L'APPROCCIO DI RETE NEL CONTRASTO ALLA VIOLENZA CONTRO LE DONNE
DALLA FORMAZIONE REGIONALE AD UNO SGUARDO EUROPEO



INTRODUCTION

- ✓ Violence against women (VAW) is a violation of a person' human rights and is recognized as a global public health issue
- ✓ **VAW rates** differ in low, middle, and high income regions, **but the health effects are similar** across the globe
- ✓ Women experiencing VAW visit the **Health Sector more frequently than women** not experiencing VAW and many women are hesitant to disclose VAW, particularly when **they are not specifically asked**
- ✓ VAW requires a multisectoral effort and **specific prevention** measures
- ✓ Health sector **can collaborate in primary prevention** (prevent new cases of violence)

- To identify the cases of violence as **soon as possible**
- To **refer** positive cases to intervention services



L'APPROCCIO DI RETE NEL CONTRASTO ALLA VIOLENZA CONTRO LE DONNE
DALLA FORMAZIONE REGIONALE AD UNO SGUARDO EUROPEO



Screening programs in health sector I

What are the benefits of early case detection and subsequent intervention ?

- ✓ **Reduces** the probability of **further** violence
- ✓ Reduces the **severity** and **duration** of the physical or psychological consequences

How we can ask about VAW in the health sector?

- **Universal screening** (standardized question to all symptom-free women)
- **Selective screening** (high-risk groups are screened)
- **Routine enquiry** (**not** standardized question to all symptom-free women)
- **Case-finding** (asking questions if certain indicators are present)



L'APPROCCIO DI RETE NEL CONTRASTO ALLA VIOLENZA CONTRO LE DONNE
DALLA FORMAZIONE REGIONALE AD UNO SGUARDO EUROPEO



Screening programs in health sector II

The U.S. Preventive Services Task Force (2013) recommended to screen all women of reproductive age for VAW, and refer positive cases to intervention services. Why?

- ✓High prevalence of the problem
- ✓Short and long-term health effects
- ✓There are valid and reliable screening instruments
- ✓The screening programs are **accepted** by health professionals
- ✓There are **effective treatment** of the problem or intervention measures

The American College of Obstetricians and Gynecologist (2012) recommended screening all pregnant women at the first prenatal visit and at least one per trimester and at the postpartum checkup



L'APPROCCIO DI RETE NEL CONTRASTO ALLA VIOLENZA CONTRO LE DONNE
DALLA FORMAZIONE REGIONALE AD UNO SGUARDO EUROPEO



Screening programs in health sector III

There are **two essential components** of screening programs that increase their effectiveness

1 Institutional support

2 Effective screening protocols

- **Exhaustive initial and ongoing training**
- **Immediate access/referrals to onsite and/or offsite support services**



L'APPROCCIO DI RETE NEL CONTRASTO ALLA VIOLENZA CONTRO LE DONNE
DALLA FORMAZIONE REGIONALE AD UNO SGUARDO EUROPEO



What it is the experience in Spain?

Health sector

- ✓ **December of 2004:** a VAW Law was published
- ✓ **December 2007:** National protocol on VAW in health care settings

Each of the Spanish regions elaborated a regional protocol



- ✓ **November of 2016.** National pact on VAW: Universal screening of VAW in health care settings was promoted



L'APPROCCIO DI RETE NEL CONTRASTO ALLA VIOLENZA CONTRO LE DONNE
DALLA FORMAZIONE REGIONALE AD UNO SCAMBIO EUROPEO



What is the experience in Valencian Region?

✓**December 2008.** Valencia Regional Protocol on VAW in health care settings

- Valid and reliable screening instrument (AAS)
- Danger assessment instrument (DA). Cultural adaptation and construct validity
- Study about health professionals perceptions about a regional screening program on VAW : 96% were agree to ask women about VAW

✓**April 2012.** We include a **computer-based screening of VAW** in electronic health records (primary health care centers and hospitals)

✓**June 2014:** A **week screening** Campaign (one health department)

✓**February 2015:** A **month screening** Campaign (regional level)

✓**2016:** 1-day training program. All health professional staff (primary health centers and responsible for emergency services)



L'APPROCCIO DI RETE NEL CONTRASTO ALLA VIOLENZA CONTRO LE DONNE
DALLA FORMAZIONE REGIONALE AD UNO SGUARDO EUROPEO



What is the experience in Valencian Region?

2016: 1-day training program. All health staff (primary health centers and emergency services.) Initial and every 2 years

✓ Institutional support

✓ How do we organize it?

- ✓ First, two training experts will be trained in each health department
 - Clinical expert
 - Public health doctor/nurse expert

They trained **all health staff** in their department

✓ **Clinical discussion session** in each primary health center and emergency services (two hours)

- Screening characteristics / the application
- Local referral services



L'APPROCCIO DI RETE NEL CONTRASTO ALLA VIOLENZA CONTRO LE DONNE
DALLA FORMAZIONE REGIONALE AD UNO SQUADRO EUROPEO



What it is the experience in Valencian Region?

Referral support Services (“Centro Mujer 24 horas”). Public service

✓They provide **free direct attention** in the social, psychological and legal field by specialized staff , 24 hours a day, 365 days a year

- 4 centers (medium and big cities)
- Rural areas
 - 4 centers
 - Mobile services on demand

✓In the health care setting, If the victim has a **extreme risk of homicide**, the health staff call the CM24horas (**voice to voice** on phone and with the victim) for a **crisis or short-term advocacy**

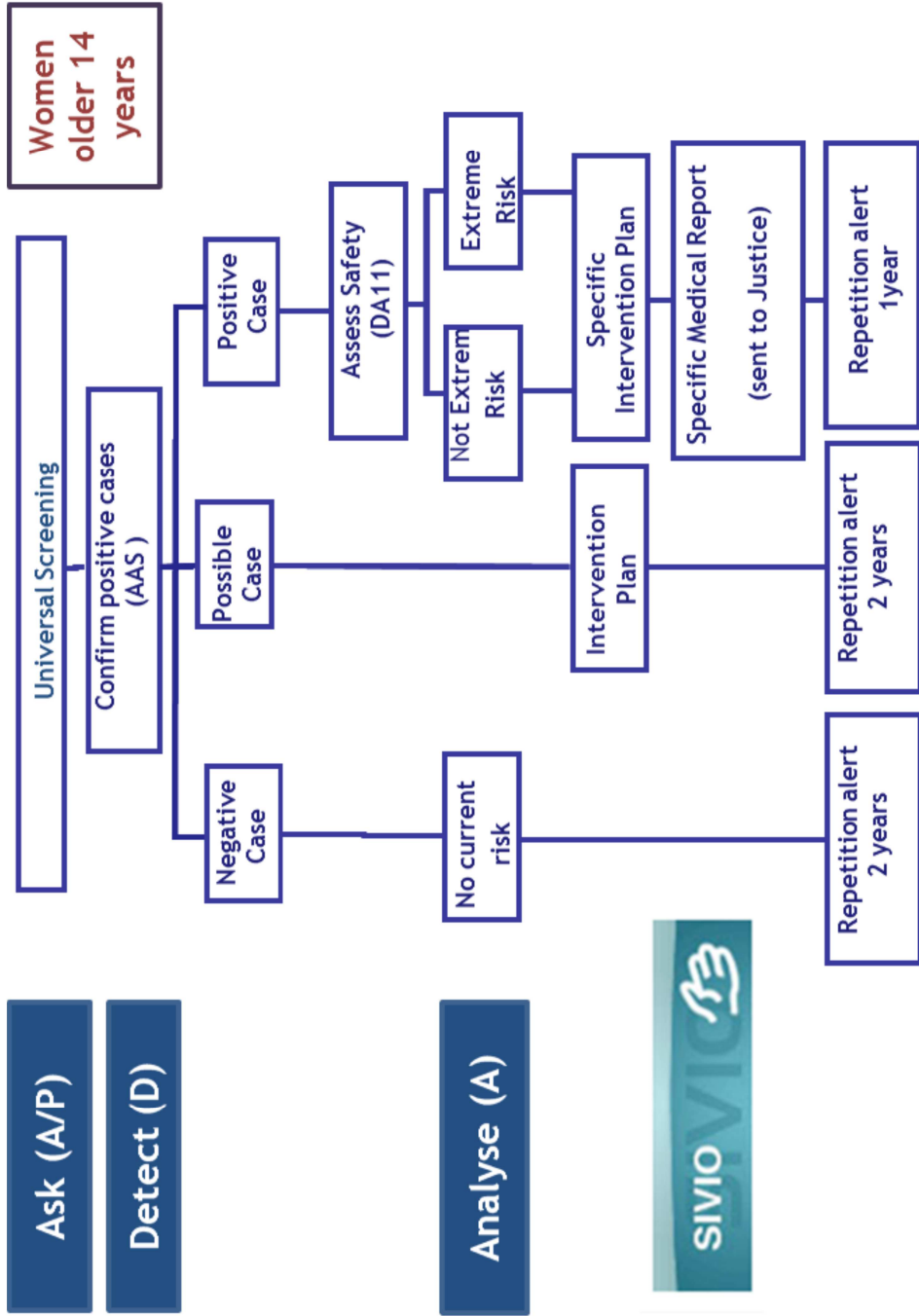
✓**Shelters and emergency housing** (public services)



L'APPROCCIO DI RETE NEL CONTRASTO ALLA VIOLENZA CONTRO LE DONNE
DALLA FORMAZIONE REGIONALE AD UNO SGUARDO EUROPEO



Algorithm of Partner screening program



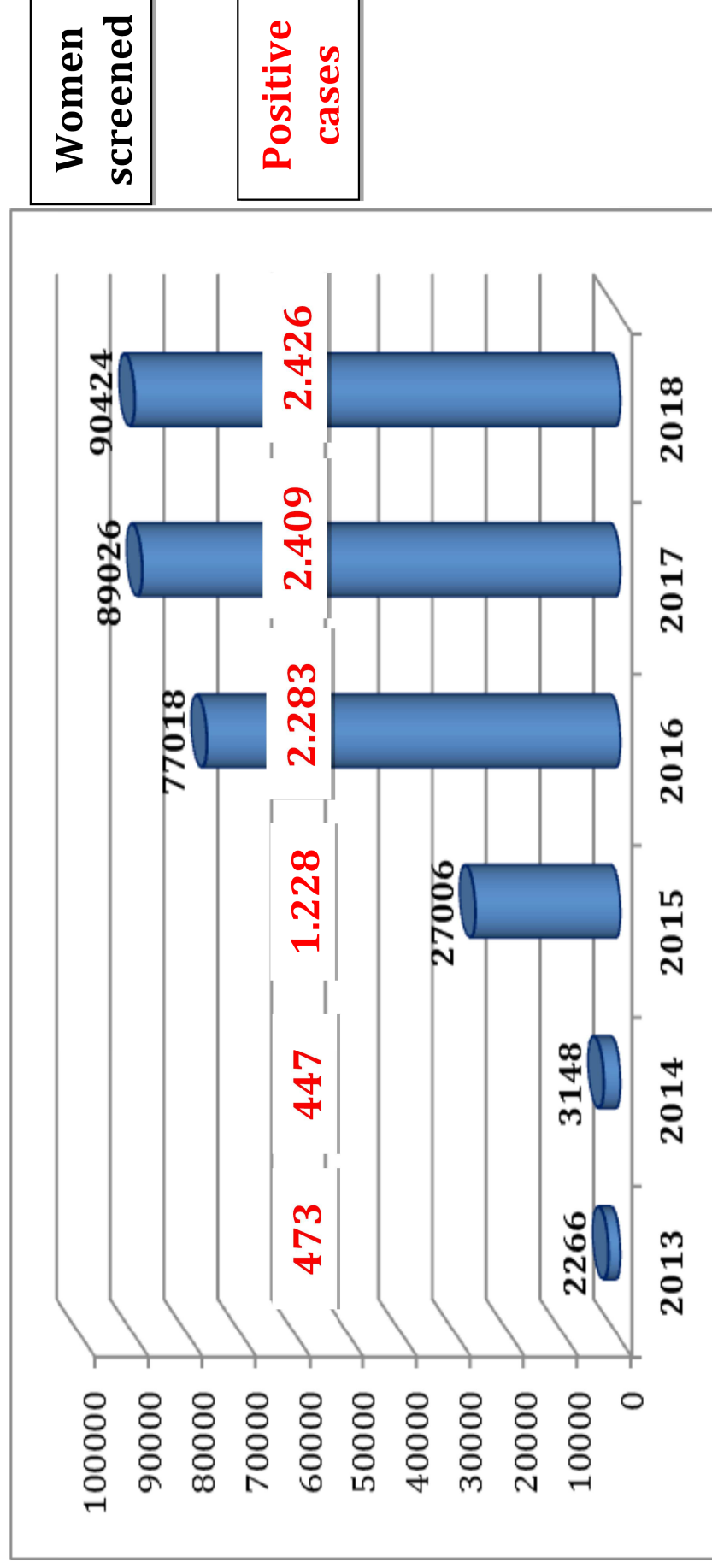
All pregnant women at first prenatal visit /one per trimester and postpartum check-up



L'APPROCCIO DI RETE NEL CONTRASTO ALLA VIOLENZA CONTRO LE DONNE
DALLA FORMAZIONE REGIONALE AD UNO SQUADRO EUROPEO

Number of women who agree to participate

Positive cases



1 week
campaign

1 month
campaign

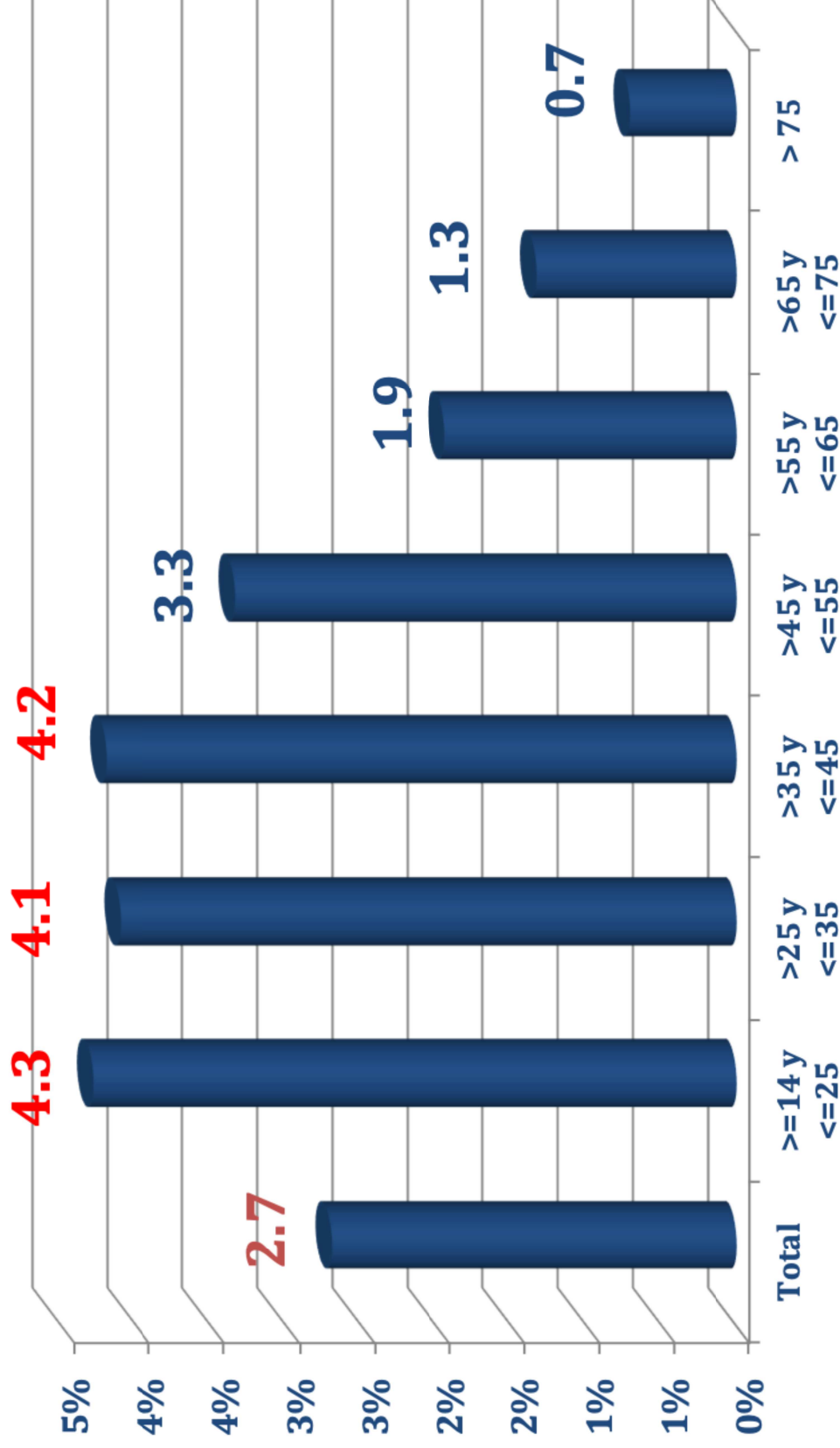
1 Day
training



L'APPROCCIO DI RETE NEL CONTRASTO ALLA VIOLENZA CONTRO LE DONNE
DALLA FORMAZIONE REGIONALE AD UNO SQUADRO EUROPEO



Prevalence of positive cases by age (2018)



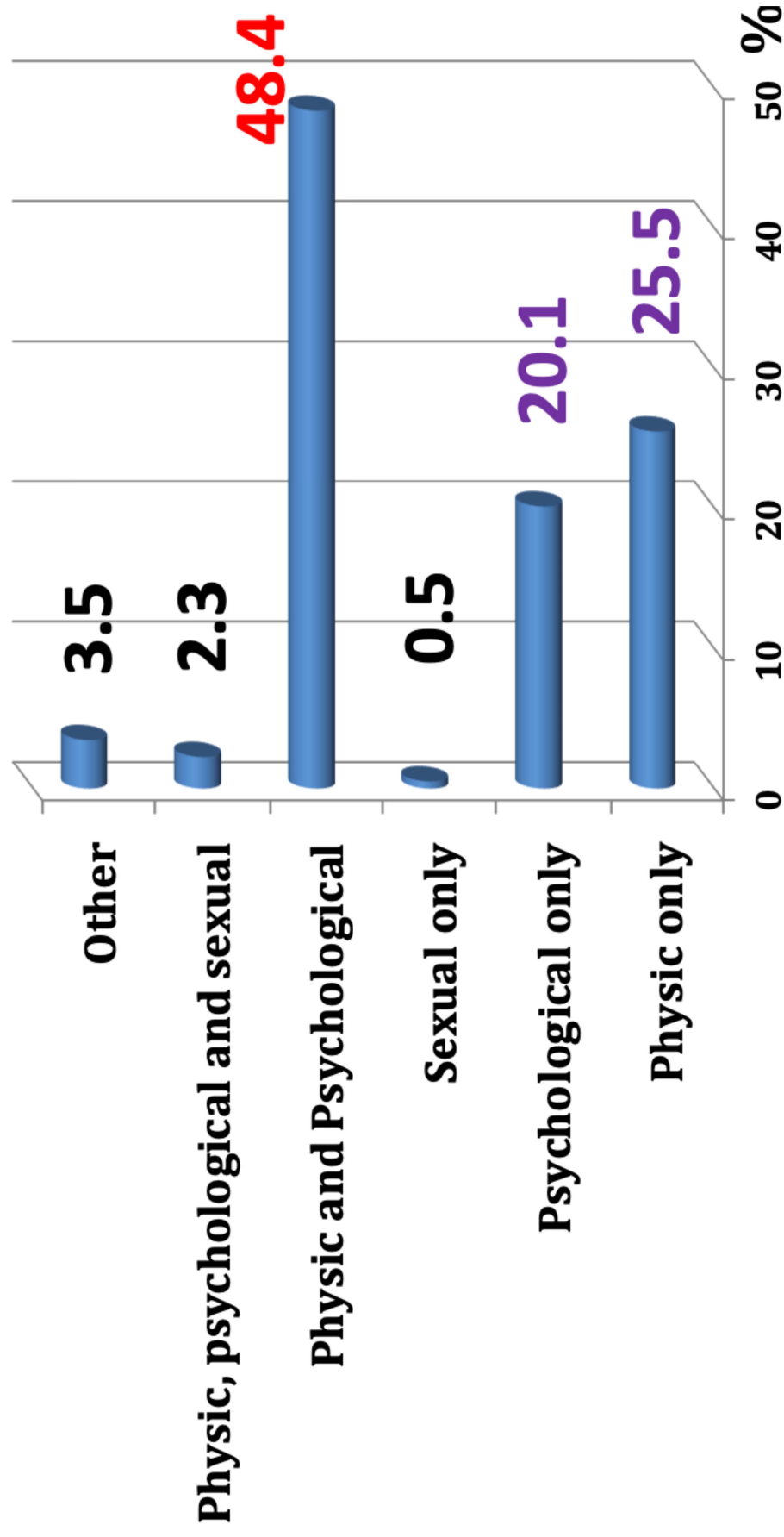
Age



L'APPROCCIO DI RETE NEL CONTRASTO ALLA VIOLENZA CONTRO LE DONNE
DALLA FORMAZIONE REGIONALE AD UNO SQUADRO EUROPEO



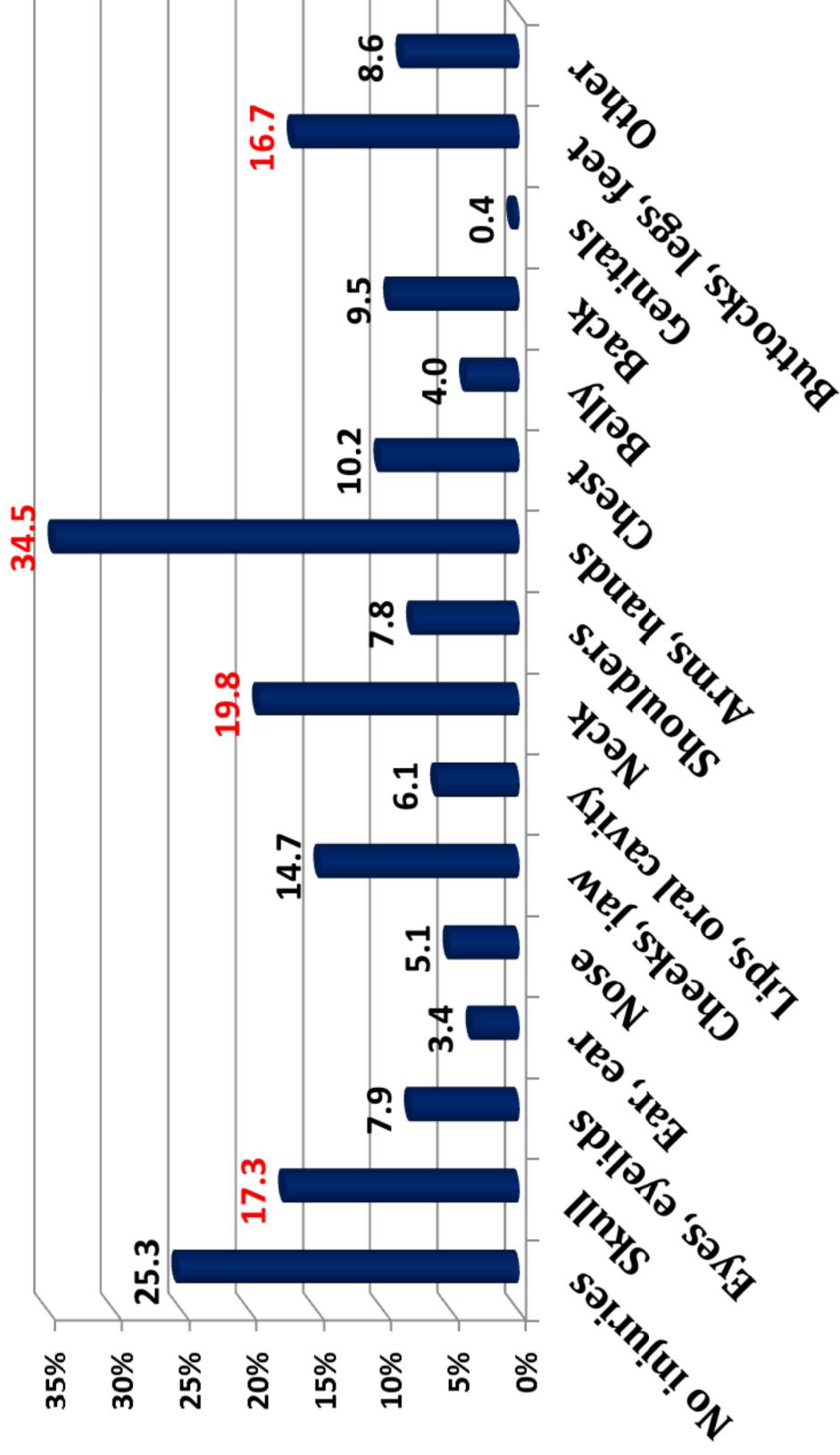
Type of violence (2018)



L'APPROCCIO DI RETE NEL CONTRASTO ALLA VIOLENZA CONTRO LE DONNE
DALLA FORMAZIONE REGIONALE AD UNO SQUADRO EUROPEO



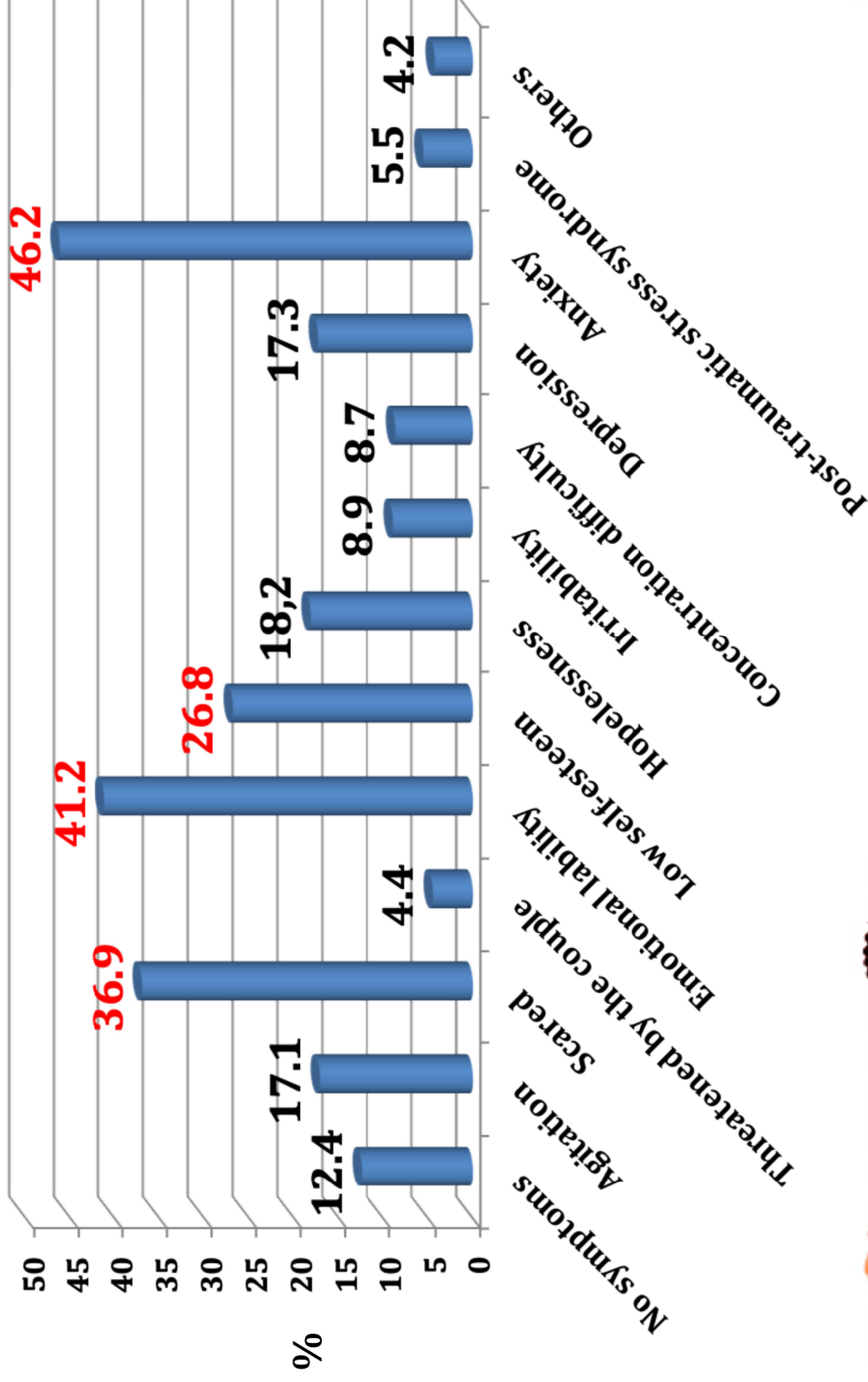
Injuries Location (2018)



L'APPROCCIO DI RETE NEL CONTRASTO ALLA VIOLENZA CONTRO LE DONNE
DALLA FORMAZIONE REGIONALE AD UNO SQUADRO EUROPEO



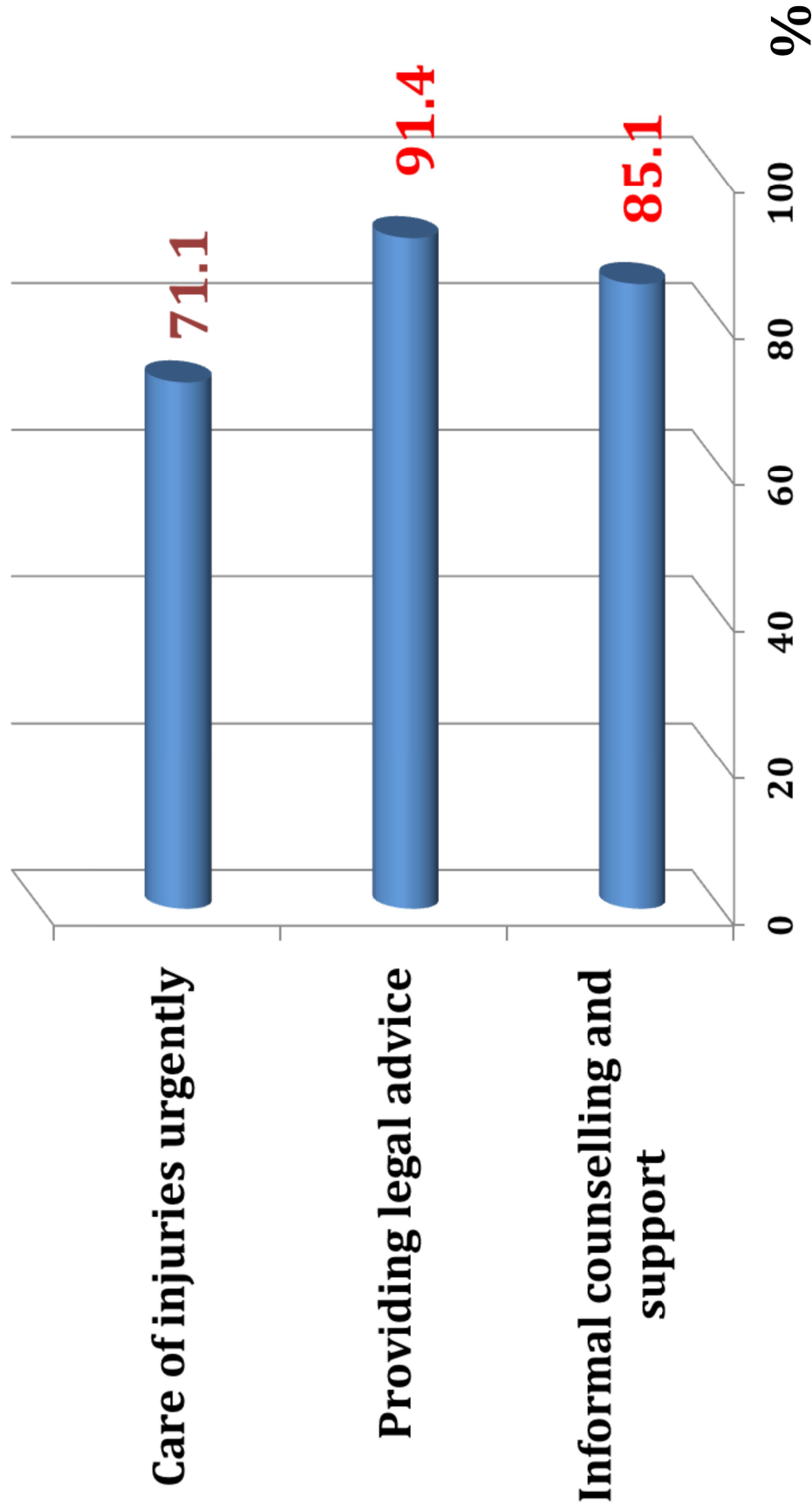
Emotional status (2018)



L'APPROCCIO DI RETE NEL CONTRASTO ALLA VIOLENZA CONTRO LE DONNE
DALLA FORMAZIONE REGIONALE AD UNO SQUADRO EUROPEO



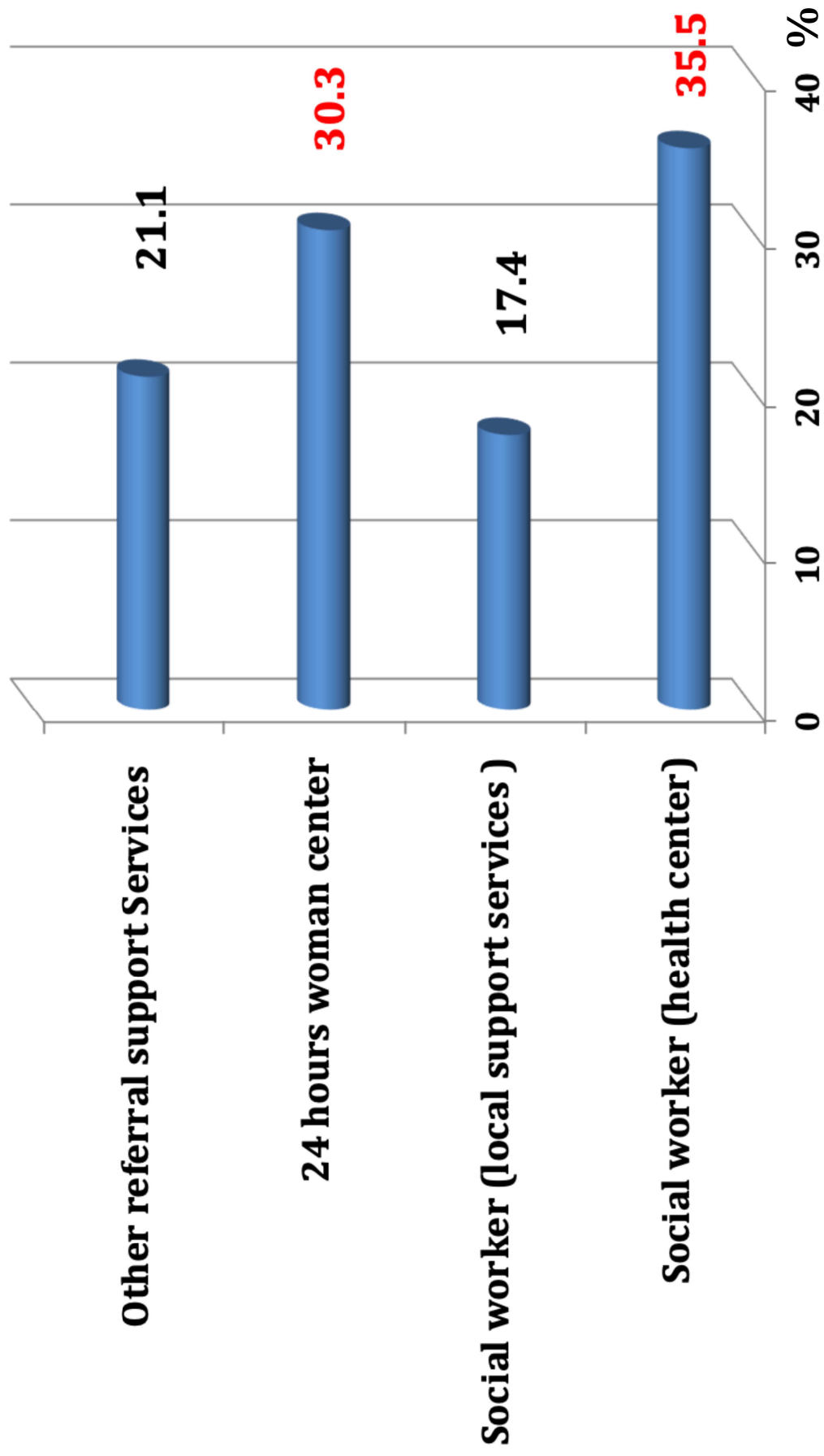
Intervention measures-Extreme risk (2018)



L'APPROCCIO DI RETE NEL CONTRASTO ALLA VIOLENZA CONTRO LE DONNE
DALLA FORMAZIONE REGIONALE AD UNO SQUADRO EUROPEO



Intervention measures-Extreme risk (2018)



L'APPROCCIO DI RETE NEL CONTRASTO ALLA VIOLENZA CONTRO LE DONNE
DALLA FORMAZIONE REGIONALE AD UNO SQUADRO EUROPEO



Conclusions

Essential elements for the success of a screening program

1. Institutional support

2. Effective screening protocols

- To include a **computer-based screening of VAW** in electronic health records (primary health centers/hospitals)
- Training plan: initial and ongoing training
- Facilitate access or refer positive to specific support services



L'APPROCCIO DI RETE NEL CONTRASTO ALLA VIOLENZA CONTRO LE DONNE
DALLA FORMAZIONE REGIONALE AD UNO SGUARDO EUROPEO





L'APPROCCIO DI RETE NEL CONTRASIO ALLA VIOLENZA CONTRO LE DONNE
DALLA FORMAZIONE REGIONALE AD UNO SCAMPO EUROPEO



AAS

1. Have you ever been **emotionally** or **physically** abused by your partner or someone important to you? YES[] NO[]

2. **Within the last year**, have you been hit, slapped, kicked or otherwise physically hurt by someone? YES[] NO[]

– If YES, by whom (*circle all that apply*)

- Husband [] Ex-husband[] Boyfriend [] Stranger [] Other [] Multiple []

• **Durante el último año**, ¿le han humillado, insultado, menospreciado, gritado, amenazado, asustado, controlado su vida o ha sufrido otra forma de maltrato emocional? SI[] NO[]

1. **Within the last year**, has anyone forced you to have sexual activities? YES[] NO[]



L'APPROCCIO DI RETE NEL CONTRASTO ALLA VIOLENZA CONTRO LE DONNE
DALLA FORMAZIONE REGIONALE AD UNO SGUARDO EUROPEO



DA-20

Mark Yes or No for each of the following.

("He" refers to your husband, partner, ex-husband, ex-partner, or whoever is currently physically hurting you.)

Yes	No		
		1.	Has the physical violence increased in severity or frequency over the past year?
		2.	Does he own a gun?
		3.	Have you left him after living together during the past year?
			3a. (If have <i>never</i> lived with him, check here ____)
		4.	Is he unemployed?
		5.	Has he ever used a weapon against you or threatened you with a lethal weapon?
			5a. (If yes, was the weapon a gun? ____)
		6.	Does he threaten to kill you?
		7.	Has he avoided being arrested for domestic violence?
		8.	Do you have a child that is not his?
		9.	Has he ever forced you to have sex when you did not wish to do so?
		10.	Does he ever try to choke you?
		11.	Does he use illegal drugs? By drugs, I mean "uppers" or amphetamines, "meth", speed, angel dust, cocaine, "crack", street drugs or mixtures.
		12.	Is he an alcoholic or problem drinker?
		13.	Does he control most or all of your daily activities? (For instance: does he tell you who you can be friends with, when you can see your family, how much money you can use, or when you can take the car?
			(If he tries, but you do not let him, check here: ____)
		14.	Is he violently and constantly jealous of you?
			(For instance, does he say "If I can't have you, no one can.")
		15.	Have you ever been beaten by him while you were pregnant?
			(If you have never been pregnant by him, check here: ____)
		16.	Has he ever threatened or tried to commit suicide?
		17.	Does he threaten to harm your children?
		18.	Do you believe he is capable of killing you?
		19.	Does he follow or spy on you, leave threatening notes or messages on answering machine, destroy your property, or call you when you don't want him to?
		20.	Have you ever threatened or tried to commit suicide?
		Total "Yes" Answers	



DALLA FORMAZIONE REGIONALE AD UNO SQUADRO EUROPEO



DA-12

Mark **Yes** or **No** for each of the following.

("He" refers to your husband, partner, ex-husband, ex-partner, or whoever is currently physically hurting you.)

1.	Has the physical violence increased in severity or frequency over the past year?
4.	Is he unemployed?
5.	Has he ever used a weapon against you or threatened you with a lethal weapon?
6.	Does he threaten to kill you?
18.	Do you believe he is capable of killing you?
10.	Does he ever try to choke you?
11.	Does he use illegal drugs? By drugs, I mean "uppers" or amphetamines, "meth", speed, angel dust, cocaine, "crack", street drugs or mixtures.
14.	Is he violently and constantly jealous of you? (For instance, does he say "If I can't have you, no one can.")
16.	Has he ever threatened or tried to commit suicide?
19.	Does he follow or spy on you, leave threatening notes or messages on answering machine, destroy your property, or call you when you don't want him to?
20.	Have you ever threatened or tried to commit suicide?



L'APPROCCIO DI RETE NEL CONTRASTO ALLA VIOLENZA CONTRO LE DONNE
DALLA FORMAZIONE REGIONALE AD UNO SQUADRO EUROPEO

